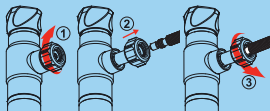


TIRE MATE INSTRUCTIONS

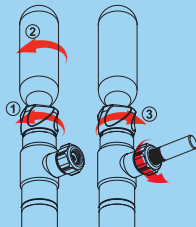
Mount pump to valve:

Release the head by turning the head clockwise one full turn. Pull out and extend onto Presta valve. Make sure Presta valve is open first and screw the pump head onto the Presta valve counter clockwise until tight.



CO₂ Inflator Instructions:

- 1) Make sure top control knob is closed all the way clockwise.
- 2) Screw threaded CO₂ cartridge into control knob slowly until the cartridge begins to contact puncture pin. Next quickly and firmly screw in to puncture the seal of the cartridge. Be sure not to screw too tightly or it may result in some gas escaping.
- 3) Hold cartridge and control knob and turn counter clockwise to fill up the tire. You can control the pressure by twisting the knob clockwise to cut off the flow of the CO₂.



Manual Pump Instructions:

- 1) Mount pump to valve: Release the pump head by turning the head clockwise one full turn. Make sure Presta valve is open. Pull out pump head and extend onto Presta valve. Screw the pump head onto the Presta valve counter clockwise until tight.
- 2) Make sure the control knob is fully closed. (It is not necessary to have a CO₂ installed to use pump manually.)
- 3) Hold pump head and pump back and forth until tire is sufficiently filled.

